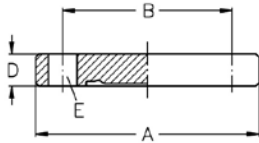
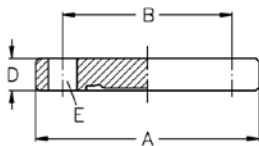
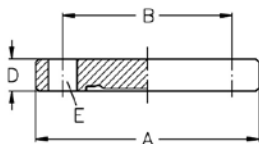


**Aseptic-/Hygienic-Flange pipe connections DIN 11853-2 + DIN 11864-2**
**Art.No.**
**EUR**
**Art.No.**
**EUR**
**Blind flange with notch ASME (AISI316L-1.4404)**


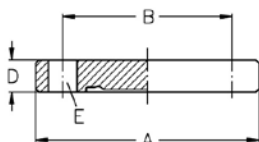
DN	A	B	D	E			AISI316L-1.4404	
1"	66	49	10	4xM8x30			481003	55,60
1,5"	79	62	10	4xM8x30			481004	56,50
2"	92	75	10	4xM8x30			481005	60,30
2,5"	107	89	10	8xM8x30			481006	62,90
3"	125	104	12	8xM10x35			481007	76,60
4"	157	135	14	8xM10x40			481008	94,50

**Blind flanges with notch DIN 11853-2 and DIN 11864-2 have the same dimensions.**
**Blind flange with notch ASME (AISI316L-1.4435)**


DN	A	B	D	E			AISI316L-1.4435	
0,5"	54	35	10	4xM8x30			481101	Enquiry
0,75"	59	40	10	4xM8x30			481102	Enquiry
1"	66	49	10	4xM8x30			481103	Enquiry
1,5"	79	62	10	4xM8x30			481104	Enquiry
2"	92	75	10	4xM8x30			481105	Enquiry
2,5"	107	89	10	8xM8x30			481106	Enquiry
3"	125	104	12	8xM10x35			481107	Enquiry
4"	157	135	14	8xM10x40			481108	Enquiry

**Blind flanges with notch DIN 11853-2 and DIN 11864-2 have the same dimensions.**
**Blind flange with notch ISO (AISI316L-1.4404)**


DN	A	B	D	E			AISI316L-1.4404	
21,3	62	45	10	4xM8x30			481231	54,10
26,9	69	52	10	4xM8x30			481232	55,60
33,7	74	57	10	4xM8x30			481233	56,30
42,4	82	65	10	4xM8x30			481234	58,20
48,3	88	71	10	4xM8x30			481235	59,70
60,3	103	85	10	4xM8x30			481236	66,80
76,1	125	104	12	8xM10x35			481237	76,20
88,9	137	116	12	8xM10x35			481238	80,10
114,3	168	146	14	8xM10x40			481239	100,60

**Blind flanges with notch DIN 11853-2 and DIN 11864-2 have the same dimensions.**
**Blind flange with notch ISO (AISI316L-1.4435)**


DN	A	B	D	E			AISI316L-1.4435	
13,5	54	37	10	4xM8x30			473329	Enquiry
17,2	59	42	10	4xM8x30			473330	Enquiry
21,3	62	45	10	4xM8x30			473331	Enquiry
26,9	69	52	10	4xM8x30			473332	Enquiry
33,7	74	57	10	4xM8x30			473333	Enquiry
42,4	82	65	10	4xM8x30			473334	Enquiry
48,3	88	71	10	4xM8x30			473335	Enquiry
60,3	103	85	10	4xM8x30			473336	Enquiry
76,1	125	104	12	8xM10x35			473337	Enquiry
88,9	137	116	12	8xM10x35			473338	Enquiry

**Blind flanges with notch DIN 11853-2 and DIN 11864-2 have the same dimensions.**

# Aseptic-/Hygienic-Flange pipe connections DIN 11853-2 + DIN 11864-2

Art.No

EUR

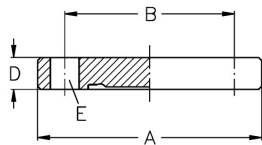
Art.No

EUR

## Blind flange with notch ISO (AISI316L-1.4435)

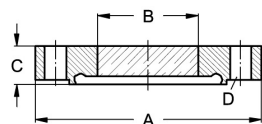
DN	A	B	D	E				AISI316L-1.4435
114,3	168	146	14	8xM10x40				473339 Enquiry

Blind flanges with notch DIN 11853-2 and DIN 11864-2 have the same dimensions.



## Flange sight glass with groove, DIN, fused

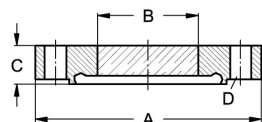
DN	A	B	C	D	bar			1.4462 Borosilicate
40	82	35	14	4xØ9	16			486135 Enquiry
50	94	40	16	4xØ9	16			486136 Enquiry
65	113	45	18	8xØ9	16			486137 Enquiry
80	133	55	20	8xØ11	16			486138 Enquiry
100	159	65	22	8xØ11	10			486139 Enquiry
125	183	75	22	8xØ11	10			486141 Enquiry
150	213	90	25	8xØ14	10			486142 Enquiry



-30 °C up to 280 °C

## Flange sight glass with groove, ASME, fused

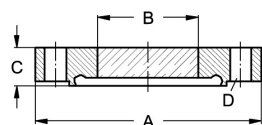
DN	A	B	C	D	bar			1.4462 Borosilicate
2"	92	40	16	4xØ9	16			486205 Enquiry
2,5"	107	45	18	8xØ9	16			486206 Enquiry
3"	125	50	20	8xØ11	16			486207 Enquiry
4"	157	65	22	8xØ11	10			486208 Enquiry



-30 °C up to 280 °C

## Flange sight glass with groove, ISO, fused

DN	A	B	C	D	bar			1.4462 Borosilicate
42,4	82	35	14	4xØ9	16			486334 Enquiry
48,3	88	37	14	4xØ9	16			486335 Enquiry
60,3	103	40	16	4xØ9	16			486336 Enquiry
76,1	125	50	20	8xØ11	16			486337 Enquiry
88,9	137	60	20	8xØ11	16			486338 Enquiry
114,3	168	70	22	8xØ11	10			486339 Enquiry



-30 °C up to 280 °C

**LINNE MANN**  
Rohrverbindungen • Edelstahlarmaturen  
Pipe connections • Stainless steel fittings

LINNE MANN GmbH • Heerweg 14-16  
72070 Tübingen / Germany

Fon: +49 (0) 7071 97555-0  
Fax: +49 (0) 7071 97555-10

E-Mail: info@linnemann-online.com  
Internet: www.linnemann-online.com